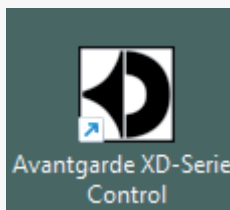


## XD-Control software for Avantgarde Acoustic G3 series subwoofer amplifiers

The XD-Control app is either available from the [www.avantgarde-acoustic.de](http://www.avantgarde-acoustic.de) website (DOWNLOADS section) or by requesting a download link from [info@avantgarde-acoustic.de](mailto:info@avantgarde-acoustic.de).

Download and install the appropriate version for your Windows-64-Bit, Windows-32-Bit or MacOS computer. Upon installation, the below XD-Control logo will appear on your computer's desktop, clicking it opens the CONTROL CENTER window of the app:



## Connecting the subwoofer amplifiers to the computer

Each subwoofer amp features twin LAN sockets. These may be interconnected by CAT 5e (or higher) ethernet cables to daisy-chain the subwoofer amps. Options to connect to the computer:

\_Use another ethernet cable from a free LAN socket of the subwoofer amps to your computer's LAN socket

\_Use another ethernet cable from a free LAN socket of the subwoofer amps to a WiFi router

NOTE: when a WiFi router is utilized, the XD-Control app on your computer/laptop will automatically detect and display all available subwoofer amps (provided the computer/laptop is logged into that router's WiFi network).

NOTE: if preferred, each subwoofer amp may also be centrally connected to a LAN switch, and from there wired to a computer/laptop or WiFi router.

## Content Overview

Using the available settings is described from the following page on.

Setting up groups for mutually controlling multiple subwoofers is described from page 4 on.

Restoring factory settings by a "FFI file" upload schedule is described from page 7 on.

## Using the software

The CONTROL CENTER windows displays all available subwoofer amps in separate lines, starting with the subwoofer type (here: SpaceHornTwin). Followed by MAC address, IP address and a ">" arrow (green initially). When this arrow is clicked, the EQ window of that subwoofer amp will open, as seen below.

Available adjustments (EQ SETTING advice see next page), effect audible in real time:

**BASS GAIN:** adjusts the overall loudness level/volume of the respective subwoofer. Corresponds to and interacts with the VOL up/down buttons at the display of the subwoofer amplifier.

**BASS BOOST:** augments the low bass level (around 45 Hz).

**LPF-RANGE:** adjusts the upper cut off frequency of the subwoofer, thereby adjusting the crossover frequency towards the spherical horns. Factory set to appropriate and practical values, thus only recommended to change when a specific sound balance between subwoofer and horns should be achieved.

**FILTER 1+2:** can be programmed for counteracting room acoustic boominess, for 2 separate frequencies if required.

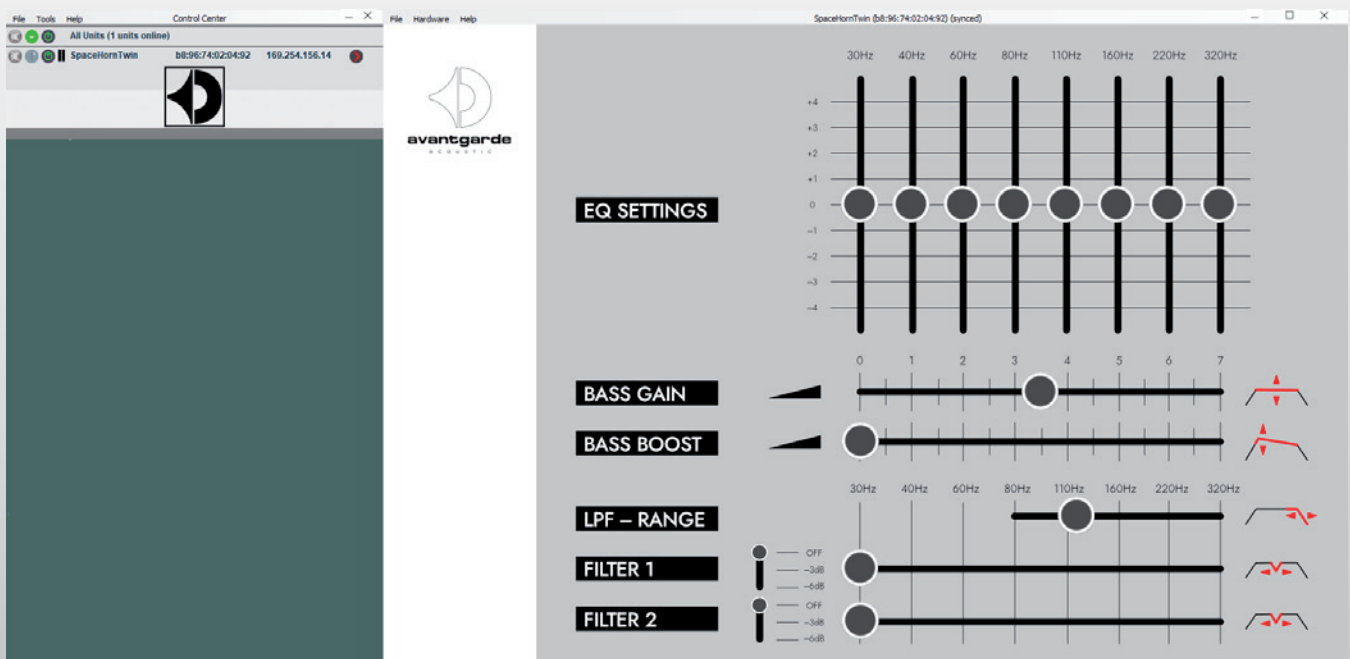
### *FILTER 1+2 USAGE EXAMPLE:*

*Upon hearing continuous unwanted over-emphasis in the bass (not satisfactorily correctable by reducing BASS GAIN), set FILTER 1 to "-6dB" setting and move the horizontal slider slowly but steadily across the scale while listening to music that displays the unwanted emphasis. Once the corresponding frequency is hit, the effect will be dampened. Possibly too much, hence then reduce the vertical setting to the "-3dB" setting.*

*Should still more damping be required, shift the FILTER 2 slider to the exact same frequency and check whether an -3dB or -6dB setting of FILTER 2 suffices to better suppress the over-emphasized frequency. Plus the setting options of the 8 EQ SETTING sliders may be used "on top", using the slider that is at the closest frequency to what is set with FILTER 1+2.*

Alternatively over-emphasized frequencies may be determined by using an audio measurement system, ideally applied by a room-acoustically trained person, like e.g. your local Avantgarde Acoustic dealer.

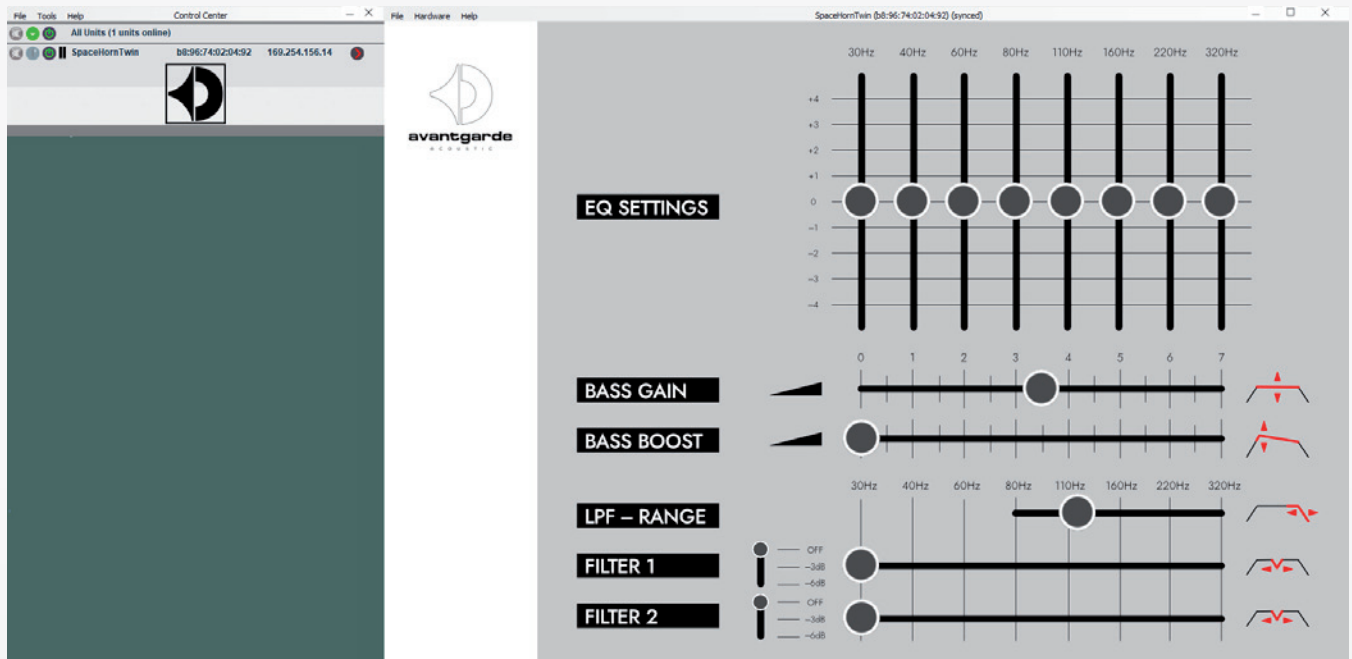
**NOTE:** When opening several windows at the same time, they open superimposed on top of each other. To make all visible, drag and drop them across your screen.



## Using the EQ settings

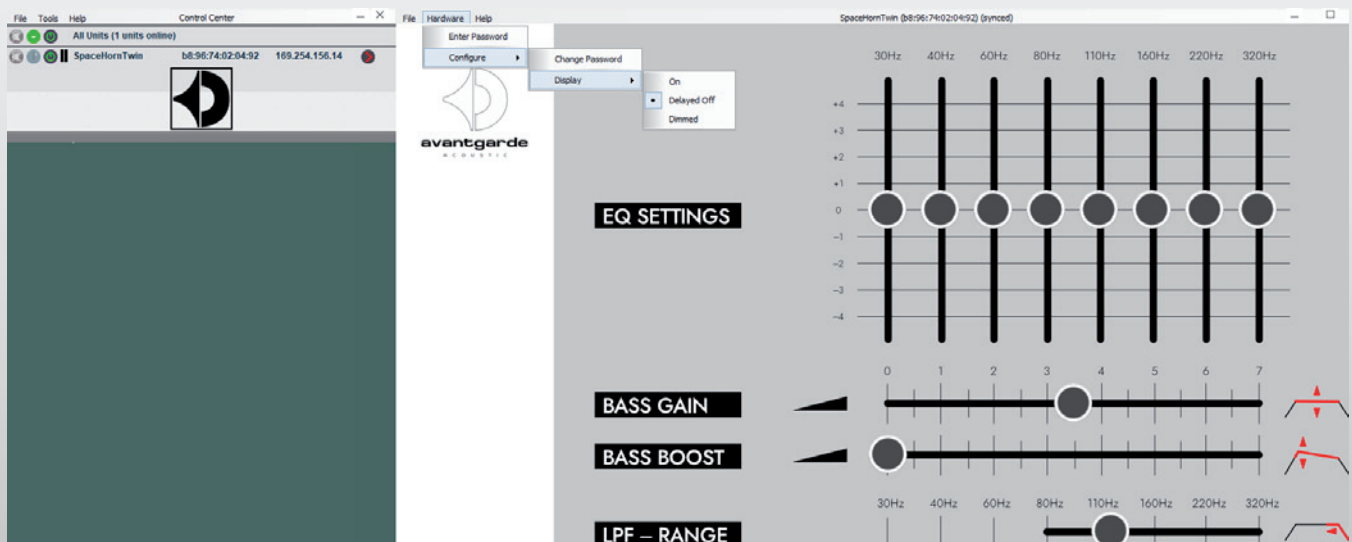
The 8-band graphic equalizer EQ SETTINGS (see below picture) allow for deliberate boosting or attenuation at the given frequencies. As the effect is audible in real time, adjustments may be made by ear during music playback or according to a room acoustic measurement, ideally applied by a room-acoustically trained person, like e.g. your local Avantgarde Acoustic dealer.

All settings chosen, incl. the graphic EQ settings, remain permanently stored in the DSP's main memory, even after switching the subwoofer amp's mains power off. As a simple way of backing-up the settings "just in case", we recommend to take a screenshot.



## Display behavior

Each subwoofer amp features a back-lit display, factory-set to light up for 10 seconds when a VOL button is pressed (option "Delayed Off"). Should this be changed individually, the picture below shows how to access the according DISPLAY menu as a sub-menu of HARDWARE. The other options: light ON permanently, light DIMMED permanently.



## Software release/version

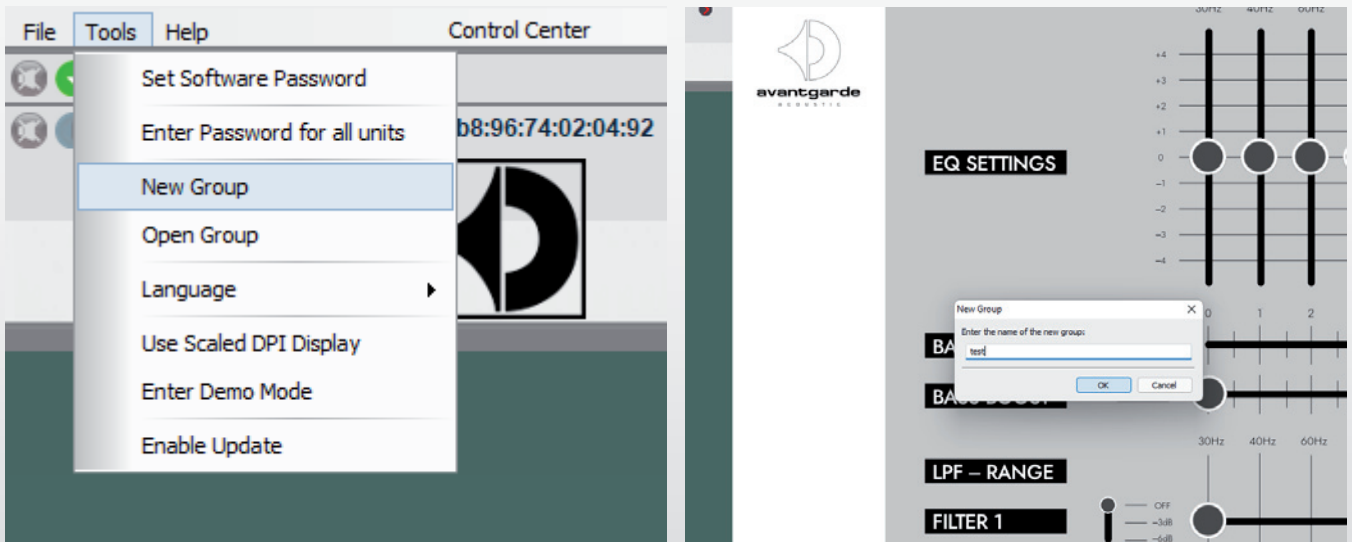
The picture below indicates how to determine the release/version number of the software, as a sub-menu of HELP.



## Grouping subwoofer amplifiers for mutual adjustments

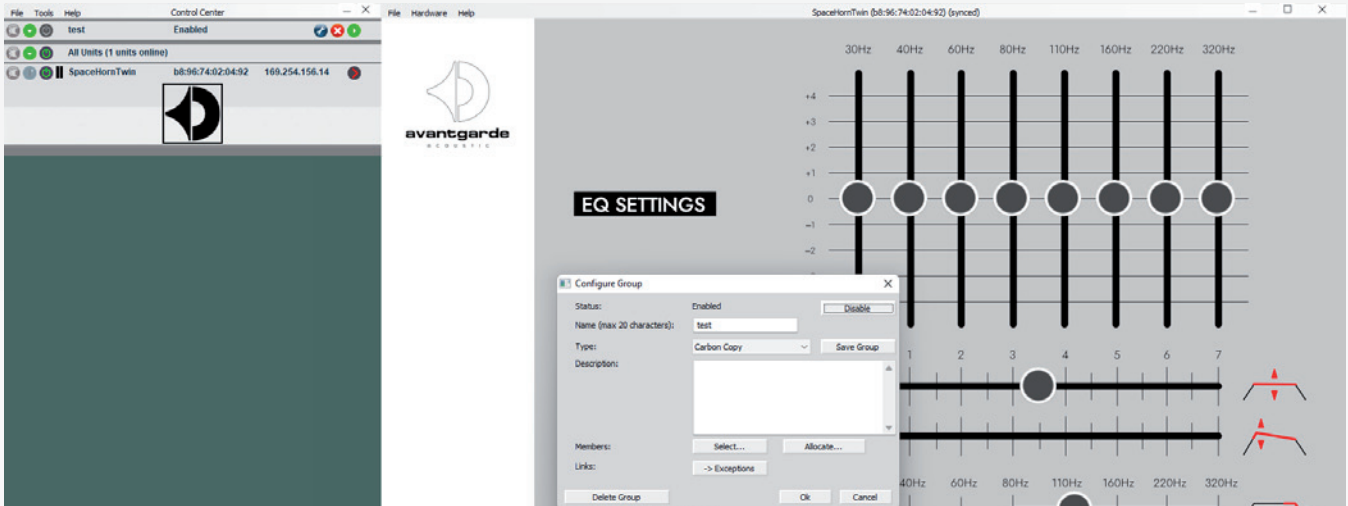
In fairly square rooms and symmetrical setups, the behavior of bass frequencies may be considered homogenous between left and right channel. Same for a centrally placed stack of SpaceHorn subwoofers for TRIO. Hence the software offers the GROUP option for making adjustments mutually for both channels, while only one subwoofer's window needs to be opened.

Therefore select NEW GROUP under the TOOLS menu, see left picture below. Enter an arbitrary name in the NEW GROUP field that opens, see right picture below.



## Configuring groups

The picture below shows, that the example group “test” is now displayed in new separate line, standardly “enabled” thus ready for use after configuration. The shown CONFIGURE GROUP window opens after clicking the blue “tool symbol” in that new line.



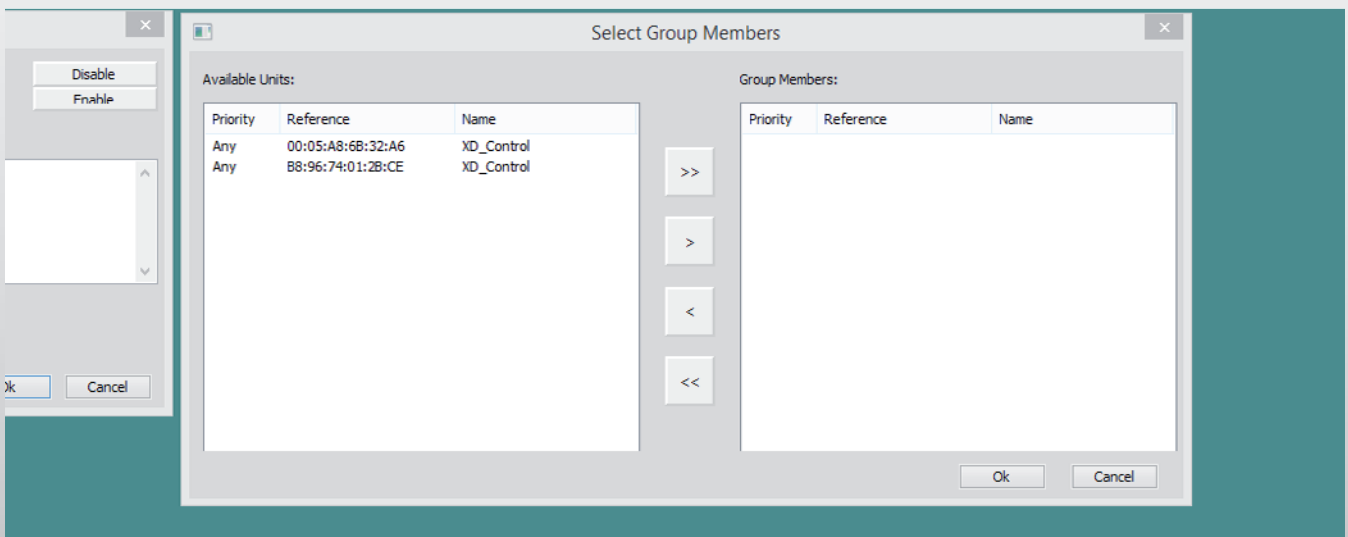
## Group members

Define the group members under SELECT. The below window will open, showing the available subwoofer amps on the left. For assigning them as group members into the list on the right, click to the “>>” symbol. This equally works for just 2 subwoofer amps of a pair of DUO (for example) and for 6 SpaceHorns of a TRIO setup.

Defining just a limited amount of group members is possible by a “one-by-one” schedule: mark the “available unit” that should be transferred, then click to the “>” symbol. Repeat this for other “available units” if necessary.

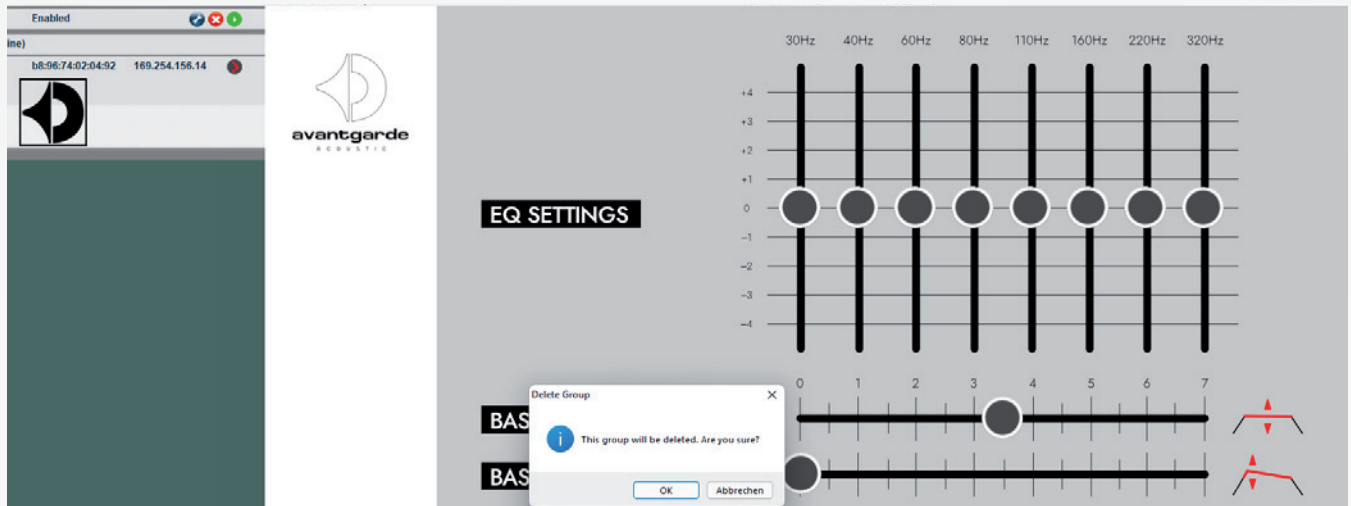
After this procedure (confirmed by clicking OK!) is completed, it suffices to open the settings window of just one subwoofer amp from the listed ones in the CONTROL CENTER, or by using the “little green arrow” to the right in the line of the group (in this example case called “test”).

All adjustments executed in the one open settings window will automatically and in real time be copied with all other group members.



## Deleting groups

After clicking the red/white “cross symbol” in the line of the group that should be deleted, the below pictured window appears, requiring another confirming OK before a group is permanently deleted.

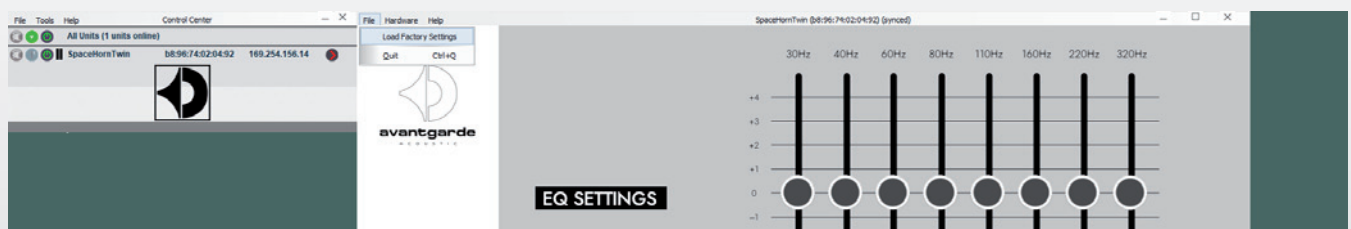


## Firmware upload and software reset to factory default

A firmware update serves 2 purposes:

- 1) for resetting the subwoofer amp to factory default, should that be advisable. For instance, if you experience a software freeze or an unusual behavior of either the software or the subwoofer amp's display.
- 2) for uploading and applying a new/updated firmware should Avantgarde Acoustic offer one.

Should one of the above become relevant, you are either contacted by Avantgarde Acoustic (your dealer respectively) regarding a new firmware being available, or can contact your dealer who will supply the necessary firmware file which is then uploaded as pictured below, by clicking to LOAD FACTORY SETTINGS in the HELP menu.



The process is then accompanied by the below information windows, from left to right: First by a cautioning window, advising on the erasure of the current settings. Please accept by OK. Then by a progress window during the actual upload. Lastly by a progress window confirming the finished process.

